

First of Ten

61 ½" x 70 ½"

Yardage Requirements:

1/3 yard of 4 coordinating colors for half square triangles.

1 1/3 yards of background fabric for half square triangles.

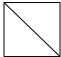
1/3 yard inner border

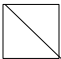
1 ¼ outer border

5/8 yard binding

4 yards backing

Cutting Instructions:

From the four 1/3 yard pieces of coordinating fabric, cut four 10 ½" squares. Then cut in half diagonally once. 

From the background fabric, cut 4 10 ½" strips. Sub cut each strip into four 10 ½" squares. Cut each square half diagonally once. 

Cut seven 1 ½" strips from the inner border fabric.

Cut seven 6 " strips of the outer border fabric.

Cut seven 2 ½" strips from the binding fabric.

Assembly:

Sew the triangle pieces together using one background piece and one of the 4 coordinating colors. Press seam open. Make thirty two 10" blocks.

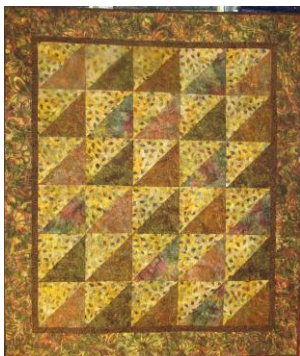


Using 30 blocks, lay out the quilt 5 blocks x 6 blocks. Sew together as shown. Quilt will measure 48" x 57 ½" .



Add the inner border. Two 1 ½" x 48" strips for the top and bottom. And two 1 ½" x 59 ½" strips for the sides. Be sure to adjust measurements to your quilt.

Add the outer border – two 6" x 50" strips on the top and bottom, and two 6" x 70 ½" strips for the sides. Be sure to adjust measurements to your quilt.



Completed quilt should measure around 61½" x 70½". Quilt as desired, then bind.

